



FORMATION EVALUATION LOG



WELL : BASKER5

FROM (m): 173 TO (m): 215 SCALE: 1/ 500

Country : AUSTRALIA	Latitude : 38°17'59.31"S	HOLE / CASING INFO 17 1/2" Hole to (mMDRT) : xxxm	Spud Date : 26-02-2006
Basin : GIPPSLAND	Longitude : 148°42'23.80"E	12 1/4" Hole to (mMDRT) : xxxm	Total Depth Date : xx-xx-2006
Field : BASKER	UTM Co-ord X (m E) : 650106.2	8 1/2" Hole to (mMDRT) : 3357m	Total Depth (mRT) : 3357m
Permit : VIC/L26	UTM Co-ord Y (m N) : 5761989.6	13 3/8" Shoe at (mMDRT) : xxx.xm	T.V.D. (mSS MSL) : 3072m
Well Type : DEVELOPMENT	RT-LAT (m) : 21.5	9 5/8" Shoe at (mMDRT) : xxx.xm	Status :
Rig Name : OCEAN PATRIOT	RT-Seabed (m) : 175.1	7" Shoe at (mMDRT) : xxxm	

ABBREVIATIONS

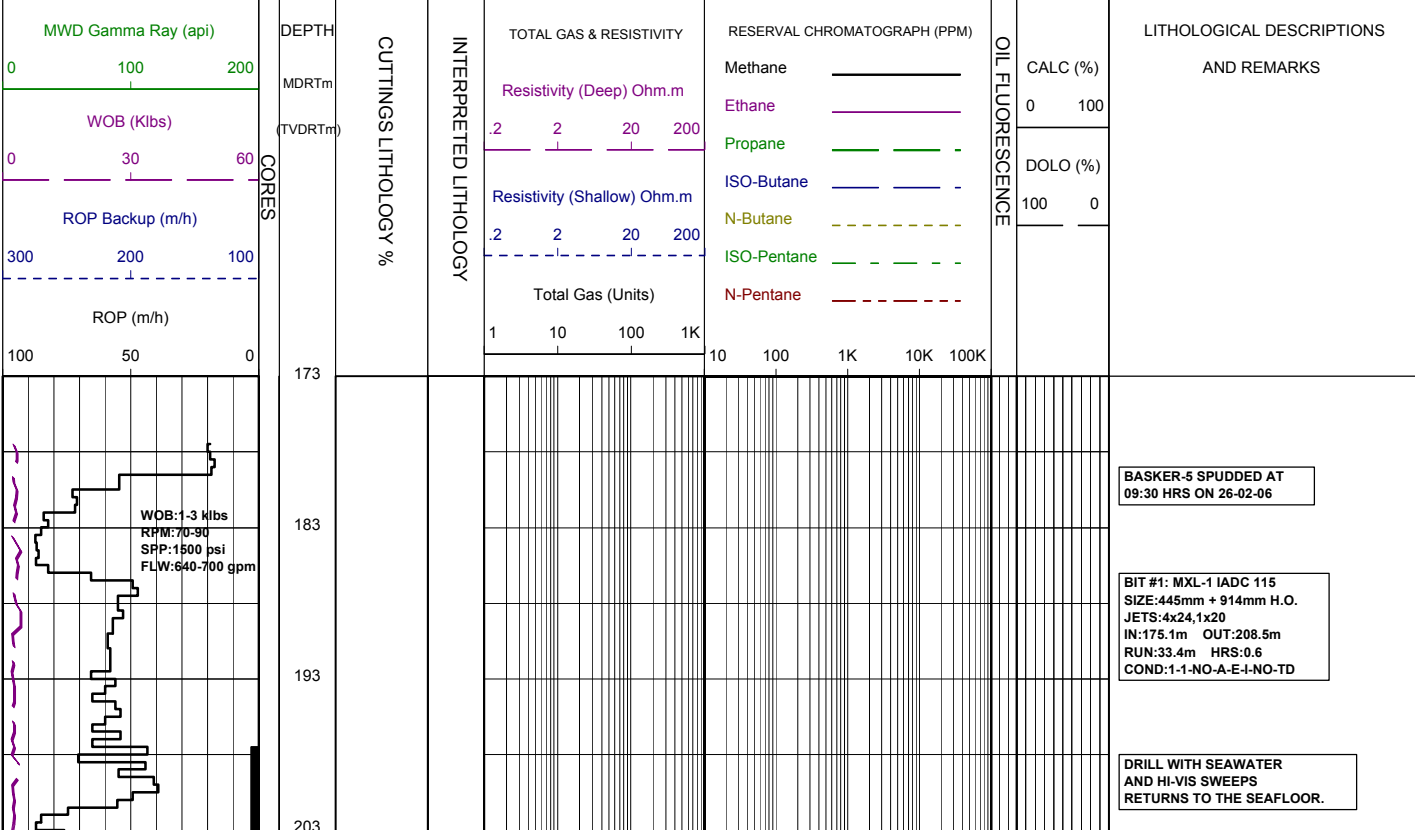
MW MUD WEIGHT	NB NEW BIT
FV FUNNEL VISCOSITY	RR RERUN BIT
PV PLASTIC VISCOSITY	CB CORE BIT
YP YIELD POINT	WOB WEIGHT ON BIT
FC FILTER CAKE	RPM REVS PER MINUTE
SOL SOLIDS	FLC FLOW CHECK
WL FILTRATE	CR CIRCULATE RETURNS
SD SAND - %	PR POOR RETURNS
S SALINITY - PPM	NR NO RETURNS
RM MUD RESISTIVITY	BG BACKGROUND GAS
RMF MUD FILTRATE	TG TRIP GAS
C CARBIDE TEST	STG SHORT TRIP GAS
LAT LOGGED AFTER TRIP	CG CONNECTION GAS
DS DEVIATION SURVEY	SG SWAB GAS
	SVG SURVEY GAS

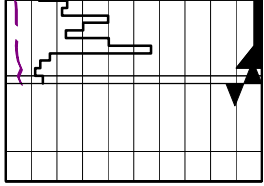
LITHOLOGY LEGEND

	Claystone		Limestone		Brachiopoda
	Siltstone		Dolomite		Cement
	ar. Silt ar		Coal		Sponges
	Fine SST		Gypsum		Glauconite
	Medium SST		Lithic Fragment		Pyrite
	Coarse SST		Foraminifera		Iron Minerals
	Marl		Fossils		Mica
	Clay, Limestone		Bryozoa		Carb Fragments

ENGINEERING LEGEND

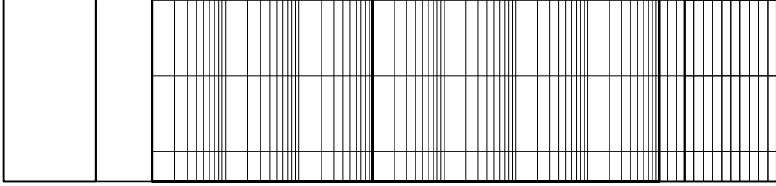
	Shoe		FIT
	Mud loss		Mud gain
	Deviation survey		
	DST		
	Test		
	Sidewall Core		
	Core		
	RFT		





209

213



762mm x 508mm (30" x 20")
Conductor Shoe @ 207.5mMDRT